



Santa Barbara County
Special Education Local Plan Area

SANTA BARBARA COUNTY

Special Education Local Plan Area

SBCSELPA



WHAT IS A SELPA???

SELPAs throughout California



Special Education Local Plan Area (SELPA)

- Founded in 1977.
- 135 plus SELPAS in California.
- Believe all students can learn.
- Students with disabilities are given equal opportunities to learn.
- Students with disabilities become contributing members of their communities.

SELPAS SUPPORT...

- High quality educational programs and services for students with disabilities.
- Training and support for parents and all educational staff.
- Collaborate with Santa Barbara County Agencies to support families.
- Collaborate with school districts to provide positive learning environments for all students.





SELPAS ENSURE...

- All individuals with disabilities receive a free appropriate public education in the least restrictive environment.
- Regular education resources are considered and utilized on a local or regional basis to meet the unique needs of students with disabilities.
- Systems exist for identification, assessment, and placement, services, and supports for students with disabilities.
- A public education system supports participation and interaction of parents and other agencies serving ages 0 through 22 years of age.

COMPLIANCE



SELPAs monitor annual compliance with the California Department of Education.



SELPAs support System Implementation.



SELPAs assures improvements identified through Self Reviews and Focused Monitoring are reviewed annually.



SELPAs support grant writing to bring monies into districts for programming for students with disabilities.



SANTA BARBARA COUNTY SELPA

25 SCHOOL DISTRICTS/PROGRAMS

South County

Adelante Charter

Carpinteria USD

Cold Spring SD

Goleta USD

Hope SD

Montecito Union SD

Santa Barbara Charter

Santa Barbara USD

SBCEO

Mid County

Ballard SD

Buellton USD

College SD

Lompoc USD

Los Olivos SD

Manzanita Charter

Santa Ynez Valley UHSD

Vista del Mar SD

North County

Blochman USD

Cuyama USD

Family Partnership Charter

Guadalupe USD

Orcutt USD

Santa Maria Bonita SD

Santa Maria Joint UHSD

SBCEO

8,936 STUDENTS ON INDIVIDUAL
EDUCATION PLANS (IEPS)
AS OF FEBRUARY 22, 2022

SANTA BARBARA COUNTY SELPA LOCATION

5385 Hollister Avenue Building 7
Santa Barbara, CA 93111
(8050-683-1424

Building is directly behind Goleta
Valley Cottage Hospital
Emergency Room Area.



SBCSELPa STAFF

Front Office:

Executive Director:

Dr. Ray Avila ravila@sbcsepa.org

Coordinator:

Jennifer Connolly jconnolly@sbcsepa.org

Office Manager:

Lindsay MacDonald lmacdonald@sbcsepa.org

Executive Assistant:

Brian Helt bhelt@sbcsepa.org

Chief Business Official:

Rachel Wigle rwigle@sbcsepa.org



SBSELPA EXECUTIVE DIRECTOR AND COORDINATOR

- Provide Fiscal Management to the 25 Local Education Agencies (LEAs)/ Districts.
- Assist with Program Coordination.
- Participate in Interagency Collaboration.
- Provide Community Awareness.
- Organize and provide Professional Development.
- Collaborate with Special Education Directors and Superintendents monthly.
- Organize and write grants for funding in support of Special Education.
- Support Transition Planning for students exiting public school at 22 years of age.
- Attends State SELPA monthly meetings.
- Provide data base system 'SIRAS' for Individual Education Plans.

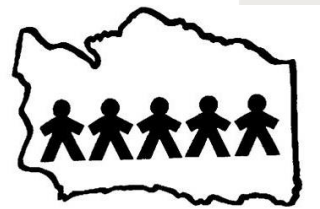


Santa Barbara County
Special Education Local Plan Area

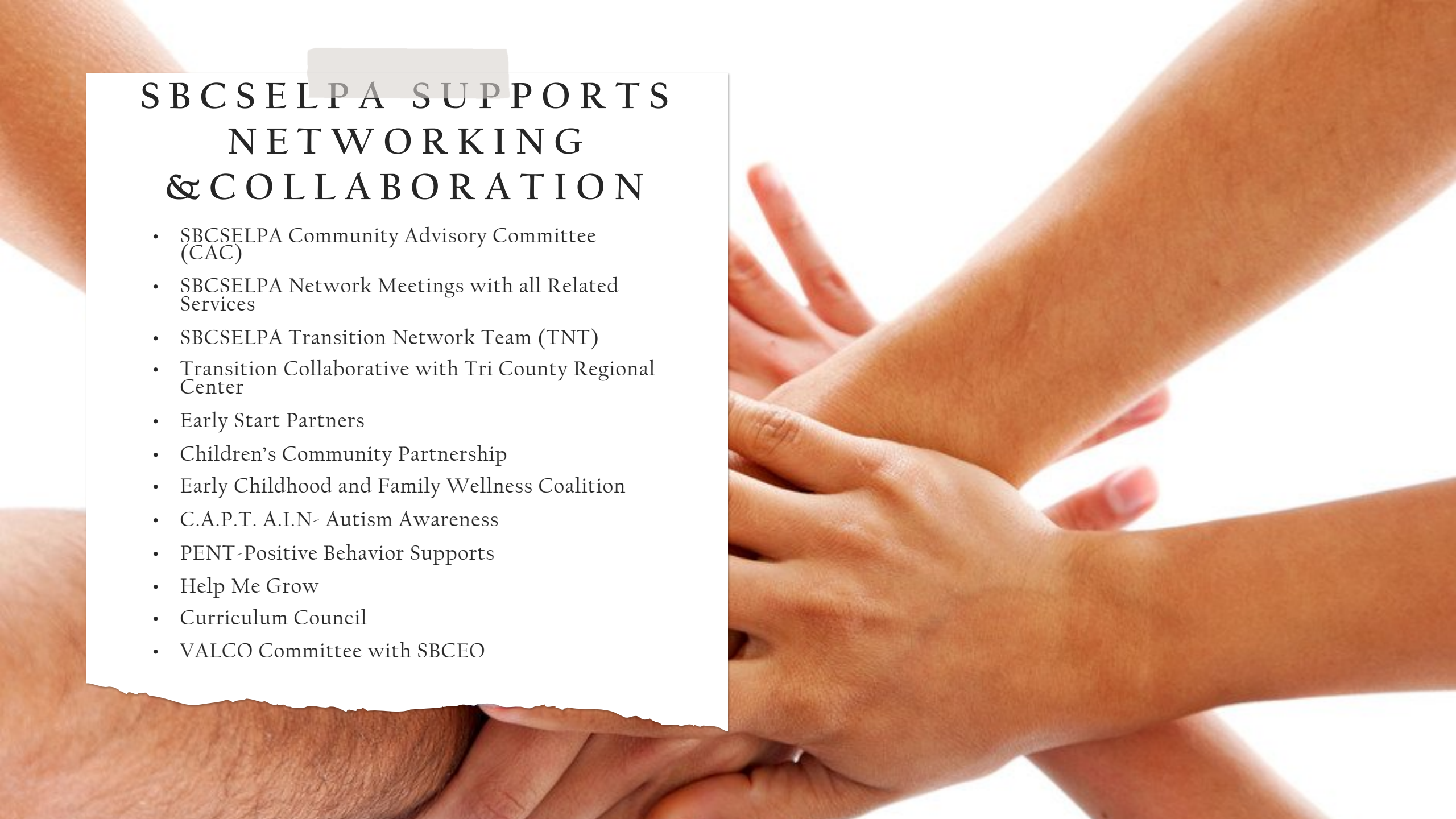
SANTA BARBARA COUNTY SELPA, A JOINT POWERS AGENCY...

- Board of Superintendents from Santa Barbara County LEAs.
- SBCSELPA offers advisement to federal and state special education laws and regulations to LEAs, parents, and community members.
- Allocates State and Federal funding to all 25 LEAs in Santa Barbara County in behalf of students with disabilities.
- Follow policies and procedures from:
the SBCSELPA Local Plan [https://www.sbcselpa.org/sites/default/files/2021-07/2020 2021 Local Plan Revised 5 3 21.pdf](https://www.sbcselpa.org/sites/default/files/2021-07/2020%2021%20Local%20Plan%20Revised%205%203%2021.pdf)

the SBCSELPA Procedural Handbook [https://www.sbcselpa.org/sites/default/files/2021-07/PDF Pro Handbook 6 18 2021.pdf](https://www.sbcselpa.org/sites/default/files/2021-07/PDF%20Pro%20Handbook%206%2018%202021.pdf)



Santa Barbara County
Special Education Local Plan Area

The background of the entire slide is a close-up photograph of several hands of different skin tones stacked on top of each other, with fingers spread, symbolizing unity and support. The hands are positioned diagonally across the frame, from the bottom left towards the top right.

SBCSELPA SUPPORTS NETWORKING & COLLABORATION

- SBCSELPA Community Advisory Committee (CAC)
- SBCSELPA Network Meetings with all Related Services
- SBCSELPA Transition Network Team (TNT)
- Transition Collaborative with Tri County Regional Center
- Early Start Partners
- Children's Community Partnership
- Early Childhood and Family Wellness Coalition
- C.A.P.T. A.I.N- Autism Awareness
- PENT-Positive Behavior Supports
- Help Me Grow
- Curriculum Council
- VALCO Committee with SBCEO

The background of the entire image is a gradient of colors from a sunset or sunrise, transitioning from a deep purple at the top to a bright yellow at the bottom. In the foreground, there are black silhouettes. On the left, a person's arm and hand are reaching out towards the center. On the right, another person's arm and hand are reaching out towards the center, mirroring the first hand. The hands are positioned as if they are about to meet or are in the process of shaking hands. The overall mood is one of hope, support, and connection.

SBCSELP A

PROGRAMS

&

SUPPORTS



PROGRAMS & SUPPORTS

Mental Health Continuum of Supports

- Wrap Services
- Grow
- Mental Health Non-Public School Placements (NPS)

Non-Violent Crisis Prevention Intervention (NCPI)

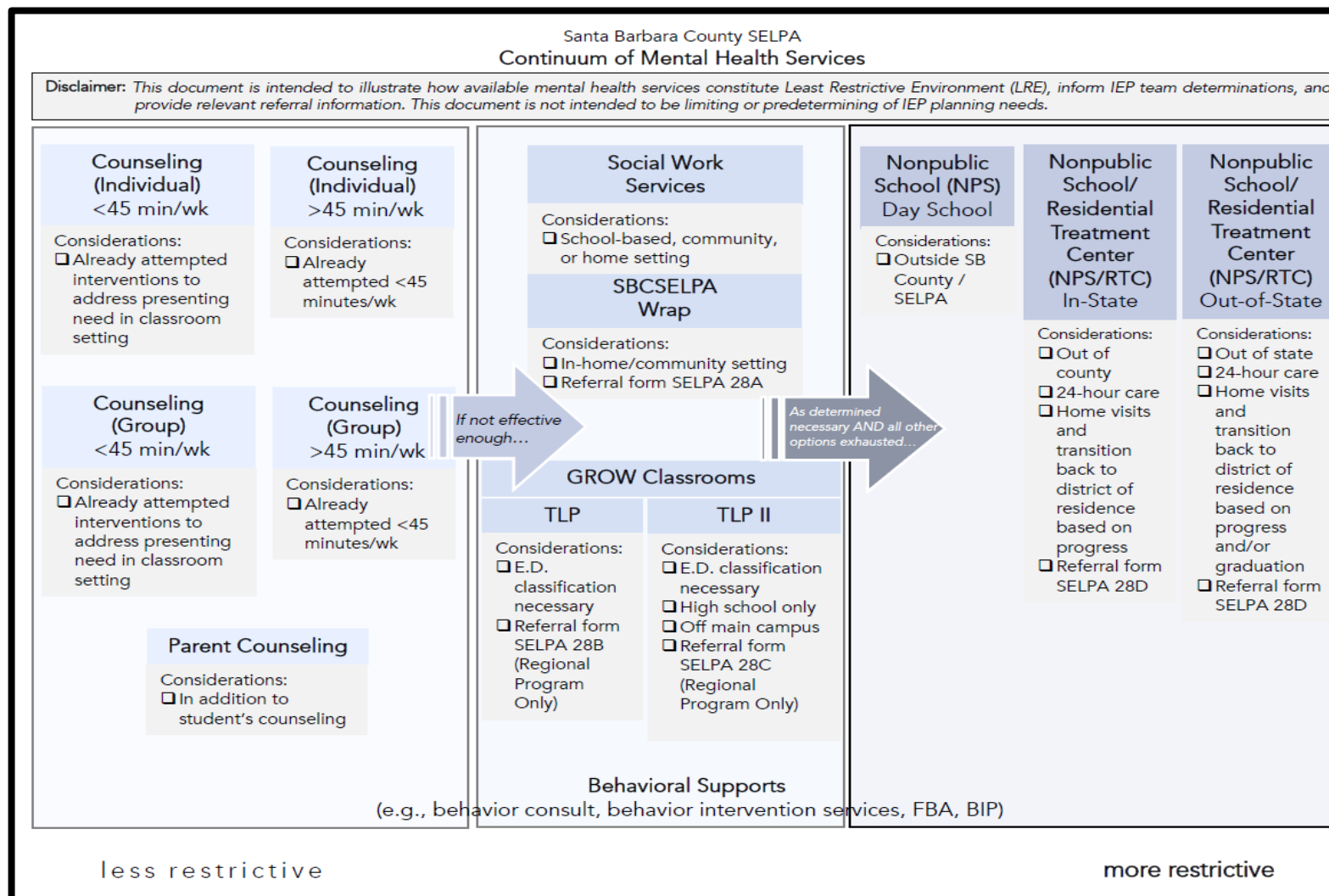
Dispute Resolution Meetings

Specialist Services

Professional Development

SBCSELPA

CONTINUUM OF MENTAL HEALTH SERVICES



MENTAL HEALTH STAFF

Mental Health Specialist

Alison Lindsey

alindsey@sbcsepa.org

Mental Health Specialist

Stephan Salter

ssalter@sbcsepa.org

Wraparound Services

Wraparound Services Facilitators

Natalie Facio-Leon

nfacioleon@sbcsepa.org

Grace Vega

gvega@sbcsepa.org

Youth Support Specialists

Amanda Munoz

amunoz@sbcsepa.org

Stephanie Guertin

sguertin@sbcsepa.org





SBCSELPA WRAPAROUND SERVICES

SBCSELPA Wraparound Support Services Facilitators and Youth Support Specialists provide:

- intensive individual student counseling
- parent counseling
- social work-type supports in various settings, including school, home, and in the community

Purpose of Wraparound Services:

- prevent further restrictive educational placements.

Service delivery:

Each approved Referral will be assigned a Wrap Facilitator and a Youth Support Specialist to offer support to the student and family for a minimum of 180 minutes per week, for a period of 6-8 weeks; during/after which the IEP team will meet to review progress towards social-emotional/behavior goals, and status of accessing their education in LRE.

Provides primarily support to students who are eligible for Specialized Education under the qualifier of Emotional Disturbance, and who are at-risk of requiring more restrictive educational placements (Ex. SDC, SBCSELPA G.R.O.W. Program, NPS).

G.R.O.W.



WHAT IS GROW?

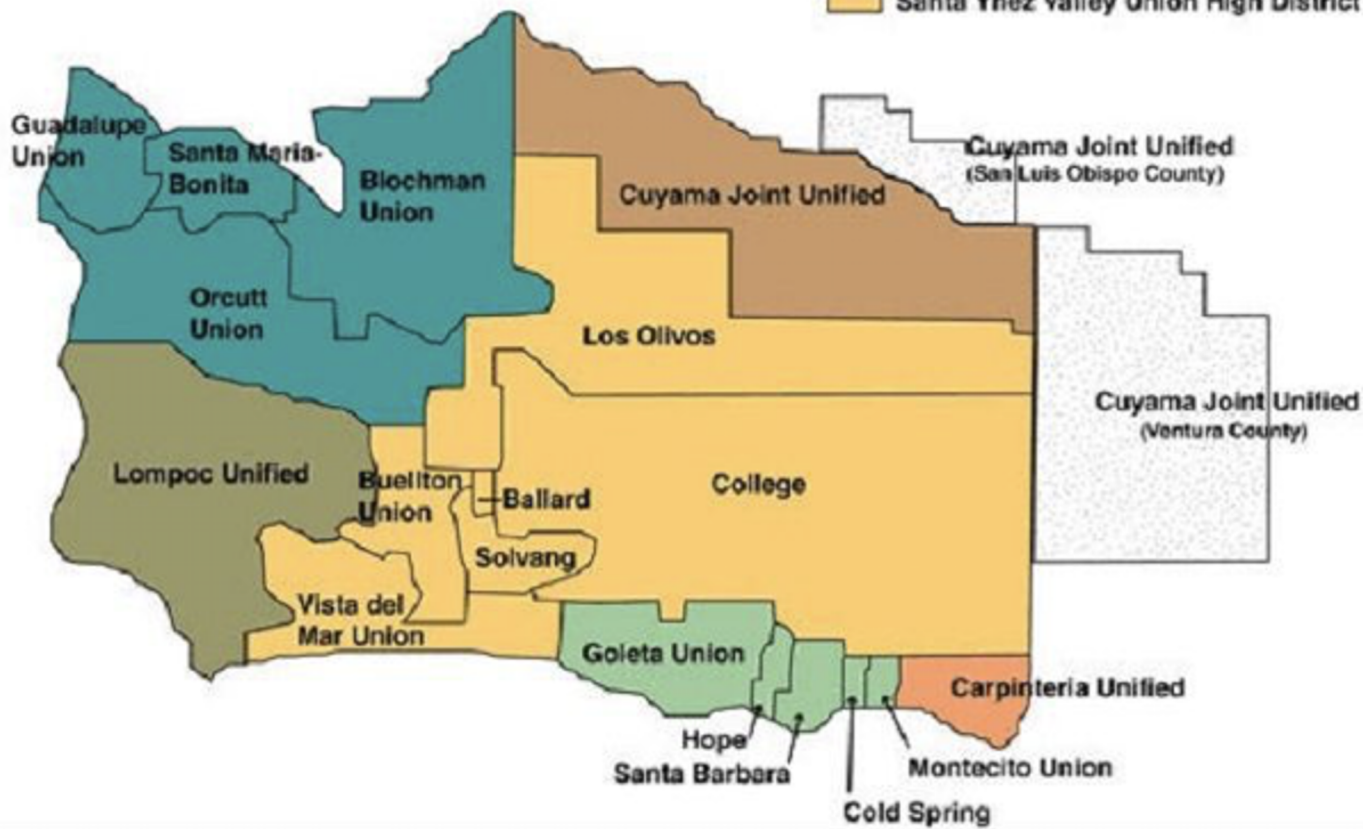
A therapeutic wellness framework designed to serve students who have difficulty accessing their education due to their emotional and behavioral needs.



Santa Barbara County School Districts

High School District legend:

- Carpinteria Unified
- Cuyama Joint Unified
- Lompoc Unified
- Santa Barbara Unified District
- Santa Maria Joint Union High District
- Santa Ynez Valley Union High District

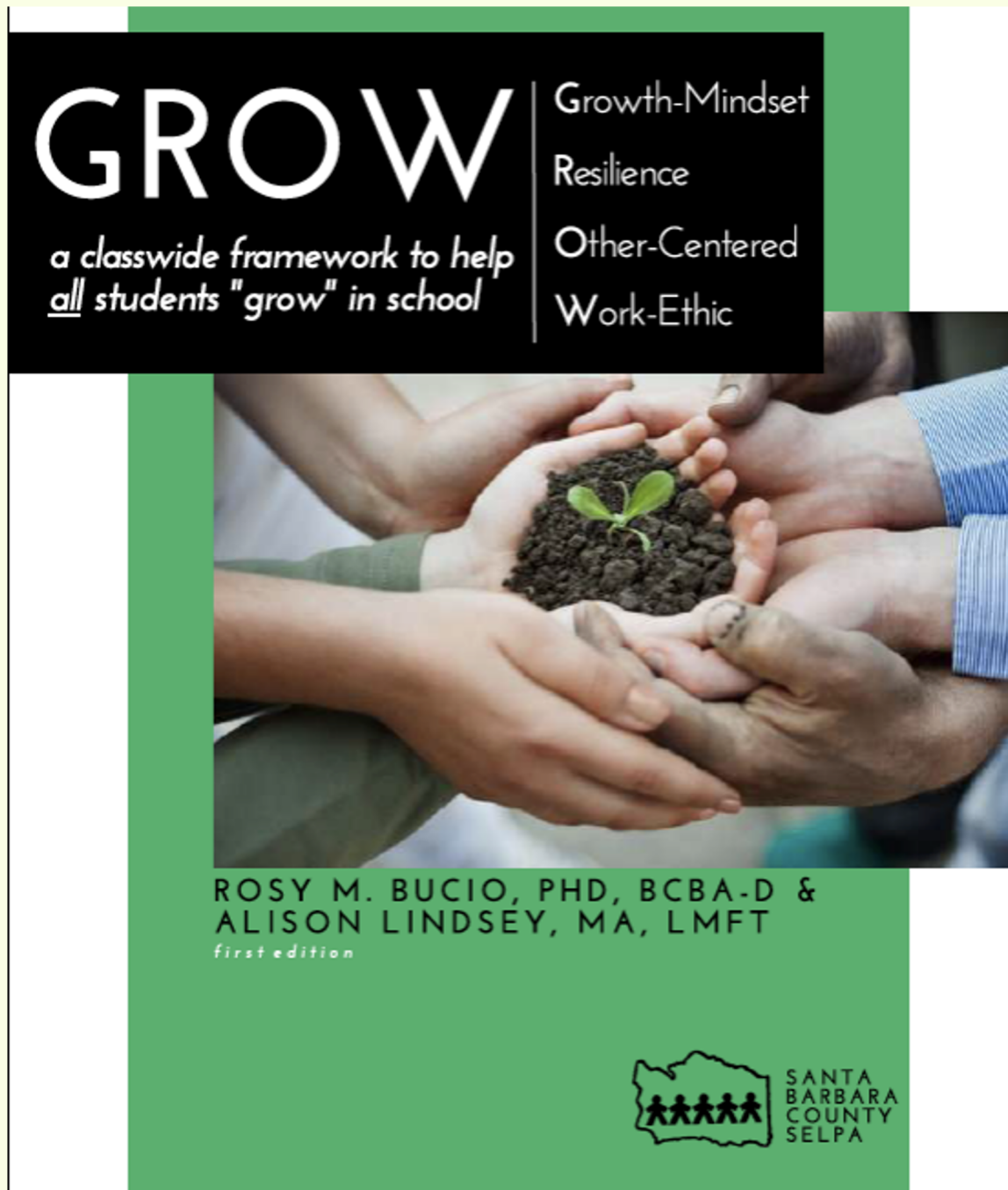
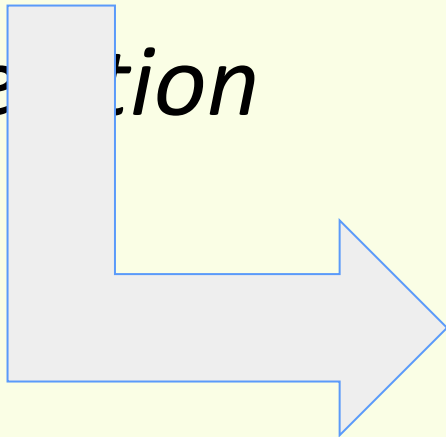


19 GROW
programs
throughout
SBCSELPA
serving students
from
Kindergarten -
High School

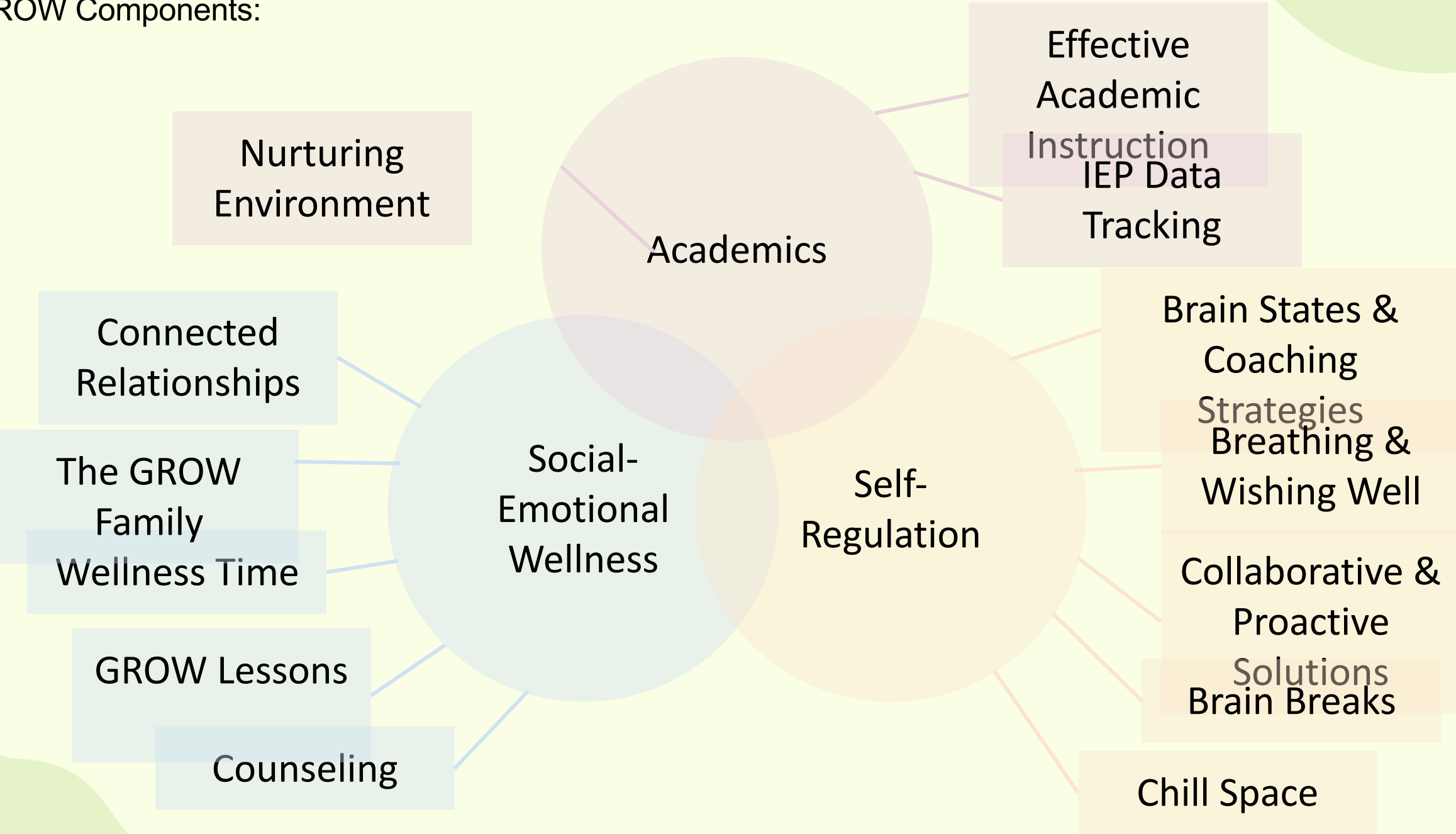
GROW

Manual

first edition



GROW Components:



SBCSELPA - FUNDED MENTAL HEALTH NON-PUBLIC SCHOOL (NPS) PLACEMENTS

SBCSELPA maintains funding, referral protocols, and case management supports to LEA's whose IEP Teams have exhausted all local, less-restrictive educational environments (or where there is an emergency consideration) where the IEP team determines that a Non-Public School placement is the most appropriate Offer of FAPE.

NPS placements are the most restrictive offer of services within the Santa Barbara County SELPA Continuum of Mental Health Services.

- placements require Residential Services as part of FAPE.
- Current residential NPS Placements are in the state of Utah.
- SELPA-funded NPS placements allocate for four parent visits to the NPS per academic year.
- Home visits recommended by the NPS, and agreed to by the IEP Team, to support a student's transition back to their local LEA / lesser restrictive educational environment.





NONVIOLENT CRISIS PREVENTION INTERVENTION (NCPI)

A program focusing on crisis prevention and intervention with a core philosophy of providing for the Care, Welfare, Safety, and Security of everyone involved in crisis situations.

Participants will be taught skills to safely respond to various levels of risk behavior while balancing the responsibilities of care.

Certification must be renewed every TWO years

Initial Course: One day Initial Course is designed for school staff working with students who have the potential for demonstrating “acting out” behavior.

Refresher Course: One day Refresher Course is designed for persons who need to re-certify and have already taken the Initial Course and received certification.

SBCSELPA DISPUTE RESOLUTION MEETINGS

SBCSELPA and member LEAs is to promote collaborative relationships with parents/guardians.

Alternatives are available for resolving disputes between LEAs and parents/guardians and other agencies to save time and money by avoiding the need to retain costly attorneys, due process and state complaints and to promote ongoing collaborative relationships.

Facilitated IEP Meeting with Trained ADR Cadre Member:

- a trained and impartial person who is not a member of the IEP team assists the IEP team to communicate effectively and work towards agreements with which the members can all feel comfortable.
- The facilitator is not a decision maker or an advisor.
- Facilitation can be used whenever an IEP team wants to improve the effectiveness of communication.
- When conflicts have developed, facilitation can help defuse tensions and restore trust and more positive working relationships.

Facilitated Non IEP Meeting with Trained ADR Cadre Member:

Facilitator attends the non-formal meeting.

Possible meeting topics:
Programming
Student Progress.

Contact SBCSELPA if needing this support!

CADRE Continuum of Dispute Resolution Processes & Practices																		
Stages of Conflict	Stage I			Stage II		Stage III			Stage IV			Stage V						
Levels of Intervention	Prevention			Disagreement		Conflict			Procedural Safeguards			Legal Review						
Assistance/ Intervention Options	Family Engagement	Participant & Stakeholder Training	Stakeholder Council	Collaborative Rule Making	Parent to Parent Assistance	Case Manager	Telephone Intermediary	Facilitation	Mediation Models	Ombudsperson	Third Party Opinion/Consultation	Resolution Meeting	Mediation Under IDEA	Written State Complaints	Due Process Hearing	Hearing Appeal (Two-Tier Systems)	Litigation	Legislation
Dimensions that help clarify placement of the options along the continuum	Third Party Assistance						Third Party Intervention											
	Decision Making by Parties						Decision Making by Third-Party											
	Interest-Based						Rights-Based											
	Informal & Flexible						Formal & Fixed											

<https://www.cadeworks.org/>

SBCSELP A STAFF - SPECIALISTS

Audiologist

Taryn Hurvitz

thurvitz@sbcseelpa.org

AT/AAC Specialist

Lisa Foote

lfoote@sbcseelpa.org

Board Certified Behavior Analyst (BCBAs)

Rosy Bucio

rbucio@sbcseelpa.org

Phil Pandac

ppandac@sbcseelpa.org

Clinical Psychologist, UCSB PIC Intern Supervision

Dr. Deborah Umansky

dumansky@sbcseelpa.org

UCSB Predoctoral Intern at SELPA

Barbara Katic

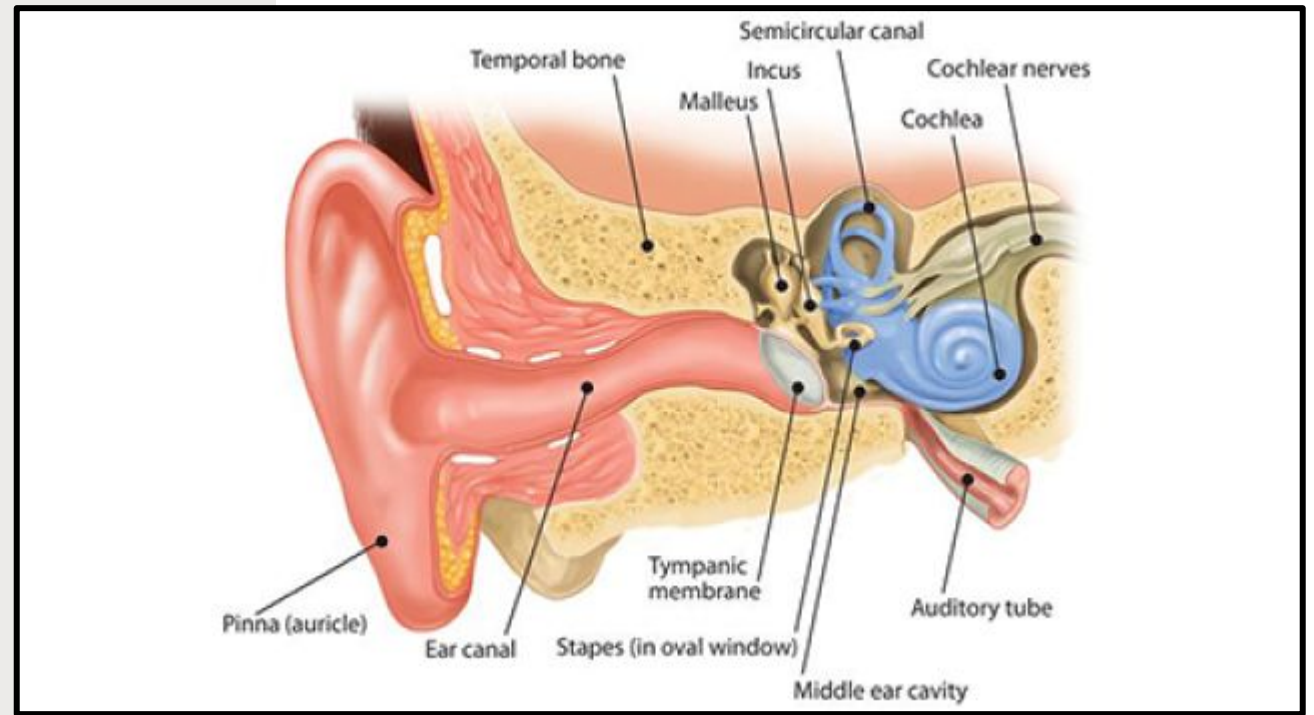
bkatic@sbcseelpa.org



SBCSELP A is 18 Staff Strong!!!

AUDIOLOGY

- SBCSELPAs has an Educational Audiologist on staff
- Educational Audiology services provided to south county and the Santa Ynez Valley Consortium by SBCSELPAs Audiologist.
- Educational Audiology services provided to north county and Lompoc by SBCEO Audiologist.
- Educational Audiologists:
 - collaborate with district Deaf and Hard of Hearing teachers.
 - overseas district Hearing Assistive Technology (HAT).





SBC SELPA ASSISTIVE TECHNOLOGY AND AUGMENTATIVE ALTERNATIVE COMMUNICATION (AT/AAC) SPECIALIST SERVICES

AT/AAC solutions range from:

- **No/Low Tech** UDL teaching strategies and classroom/environmental set up, visual supports, pencil grips etc.
- **Mid Tech** calculators, timers, organizational systems, voice output devices.
- **High Tech** Software, apps, extensions to support communication, reading, writing, executive function, and specialized equipment to support students with low incidence disabilities.

Services provided by AT/AAC Specialist:

- Collaborate and consult with IEP team for ongoing consideration process to implement AT solutions and accommodations for student access to:
 - curriculum
 - support communication needs
 - increase functional independence
- Assist in researching and training student/staff on chosen AT.
- Provide SELPA-wide trainings related to AT/AAC.
- Facilitate an IEP team-based formal AT/AAC Assessment when indicated by referral process.

PROFESSIONAL DEVELOPMENT

[HTTPS://SBCSELP.A.K12OMS.ORG](https://SBCSELP.A.K12OMS.ORG)

ONLINE EVENT CALENDAR BY MONTH

CHECK OUT
SBCSELP.A YOUTUBE CHANNEL
FOR RECORDED EVENTS.

[HTTPS://WWW.YOUTUBE.COM/
CHANNEL/UCKNIYRZQIS5EOPA
8IK5XDIW](https://WWW.YOUTUBE.COM/CHANNEL/UCKNIYRZQIS5EOPA8IK5XDIW)

Professional Development Offerings 2021-2022



Santa Barbara County
Special Education Local Plan Area
SELPA

(July 2021)

RESOURCES

- Website: www.sbcselpa.org
- OMS Calendar of Events
Professional Development
<https://sbcselpa.k12oms.org/>
- Special Education Parent Handbook www.sbcselpa.org
- SIRAS Systems <https://www.sirassystems.org>

Educators Resources

- SBCSELPA YouTube Channel for all recorded trainings
- Back2School Padlet of Resources
<https://padlet.com/mslaterselpa4200/trcig7ygv4ood8uvback2school>

For more information
contact:

Dr. Ray Avila
SBCSELPA Executive
Director

ravila@sbcselfpa.org

Jennifer Connolly
SBCSELPA
Coordinator

jconnolly@sbcselfpa.org

